

*eBook*

# PRO LINE FLOOR MODEL PLATELET STORAGE

*Industry-leading performance and innovation  
in platelet storage*

BY HELMER SCIENTIFIC



# CONTENTS



---

01  
KEY OBJECTIVES

---

02  
PRO LINE PLATELET  
STORAGE SYSTEMS  
DEFINED

---

03  
OPTICOOL™ RT  
TECHNOLOGY

---

04  
PERFORMANCE AND  
RELIABILITY

---

05  
MONITORING AND  
CONTROL

---

06  
AGITRAK™  
TECHNOLOGY

---

07  
EFFICIENCY AND  
SUSTAINABILITY

---

09  
PRO LINE INCUBATORS  
AND AGITATORS

---

# KEY OBJECTIVES

- What are Pro Line Platelet Storage Systems?
- How does OptiCool™ RT Technology increase efficiency and sustainability?
- How does AgiTrak™ agitation performance monitoring optimize platelet storage and compliance?





# WHAT ARE PRO LINE FLOOR MODEL PLATELET STORAGE SYSTEMS?

Life-saving platelet products are critical to patient care. Helmer Scientific Pro Line floor model incubators combine innovations in performance, reliability, and efficiency to offer optimized platelet storage and support blood bank compliance.

## Performance and Reliability



Provides precise temperature uniformity using OptiCool™ RT cooling and heating technology.

## Monitoring and Control



Increases user control with the i.Center® Plus information center and AgiTrak™ agitation monitoring system

## Efficiency and Sustainability



Energy efficiency and savings reduce operating costs while eliminating HFCs supports sustainability initiatives.





# OPTICOOL™ RT COOLING AND HEATING TECHNOLOGY

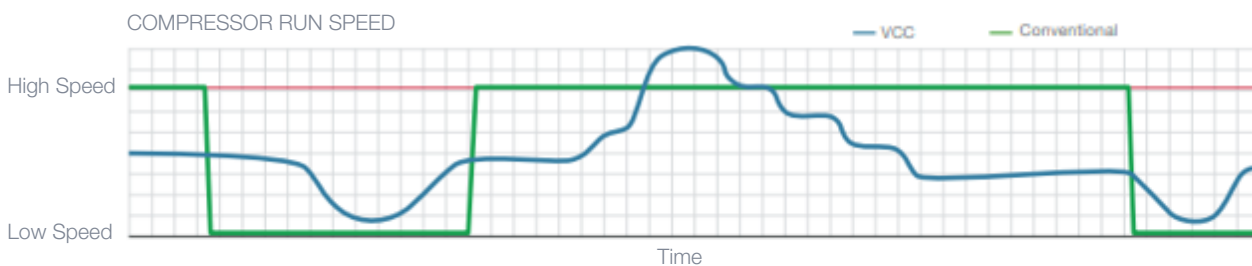


The **OptiCool™** RT system pairs a variable capacity compressor (VCC) and natural hydrocarbon (HC) refrigerants with pulse heating to deliver a reliable storage solution for the safe storage of platelet products.

## Variable Capacity Compressor System

A VCC system optimizes temperature performance and energy efficiency:

The OptiCool™ RT system uses intelligent sensors to monitor operating conditions. When the door of the incubator is opened, the VCC runs at a higher speed to deliver optimal temperature performance. When the temperature stabilizes, the VCC runs at a lower speed, resulting in lower energy consumption. The heater pulses off/ on to achieve the correct temperature range.

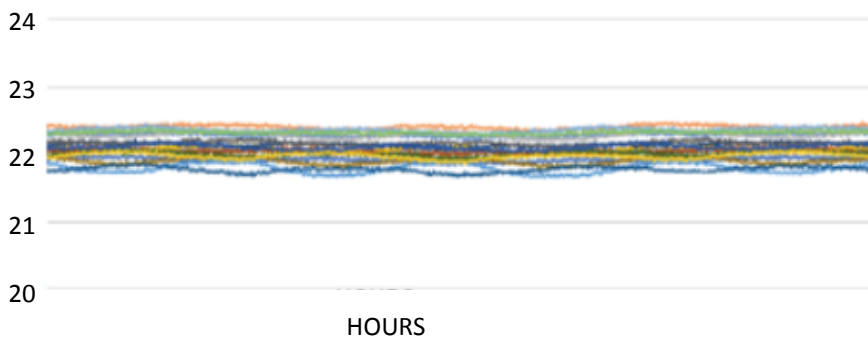


# PERFORMANCE AND RELIABILITY

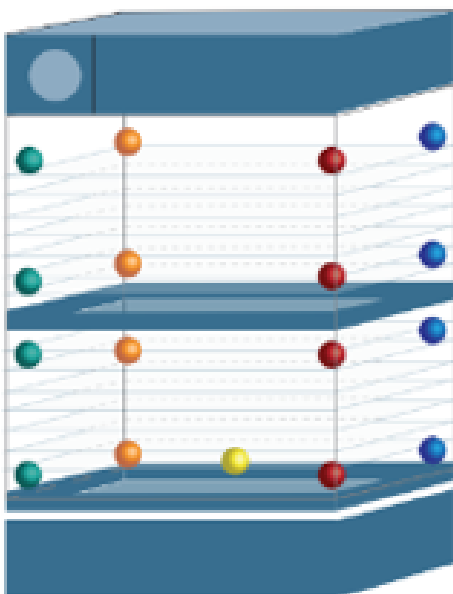


Innovations in Helmer Scientific's Pro Line floor model incubators keep platelet products safe and ready to use with the reliability you expect.

## Uniformity with PC-Pro Incubators



Helmer Scientific uses **OptiCool™ RT technology** for optimized platelet storage and other applications that require room temperature storage. Pro Line models have precision temperature controls and temperature uniformity of  $\pm 1^\circ\text{C}$ , providing a consistent room temperature storage environment.



At an operating set point of  $22^\circ\text{C}$ , these models maintain consistent room temperature storage between  $20\text{-}24^\circ\text{C}$ , ensuring a stable storage environment for your platelet products.

Probe Locations for Uniformity Testing

# MONITORING AND CONTROL



The i.Center® Plus information Center provides constant temperature monitoring and control, password protected settings, graphs, and reporting functionality to keep platelet products safe and support blood bank compliance.

## System Status Console

- Monitor status of the unit with one quick glance at the home screen.
- Current alarm conditions and alerts appear in a red alarm banner across the top when alarm activates for improved visibility to alarm conditions.



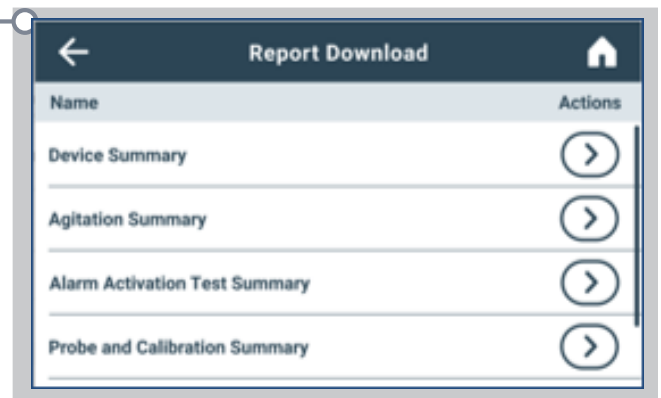
## Information and Event Center

- Performance history is logged.
- Information recorded includes: alarms, event status, event acknowledgement, min/max temps, and 7- and 1-day interactive graphs.



## Data Transfer Center

- Support compliance by exporting temperature and event data via USB port.
- Download up to 10 years of data with a wide array of PDF reports that can be generated on-demand.
- Reports include device summary, agitation, settings, historical data, system diagnostics and more.
- If needed, USB port can be disabled to support facility security protocols.





# AGITRAK™ AGITATION MONITORING SYSTEM



The AgiTrak™ agitation performance monitoring system optimizes platelet storage and monitoring compliance and is integrated with the i.Center® Plus.

## Multiple Alarm Options

Agitator motion, door open, power failure, communications failure, and low battery alarms ensure platelets are continuously agitated to support compliance.

## Agitator Set Up

Set up and monitor agitator motion and speed, set motion alarm delay, and enable or disable alarms. Agitation may be turned off to support other storage applications.

## Live Status Monitoring

Real-time speed and cycle count information, minimum and maximum speed for previous hour, and reset cycle count support preventative maintenance.

## Diagnostics

View operational status details, including lifetime cycle count.



# EFFICIENCY AND SUSTAINABILITY



OptiCool™ RT cooling and heating technology significantly reduces energy use. **Pro Line floor model incubators use over 75% less energy than traditional incubators, reducing the total cost of ownership.**



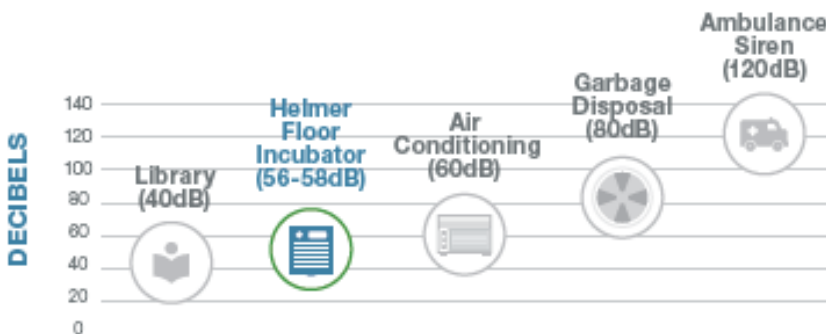
Energy use by Helmer Scientific Pro Line models is significantly lower than traditional incubators, which reduces facility operating costs.

Using an average energy rate of \$0.1279/kWh\*, that's an annual savings of up to **\$700 per unit.**

\*Based on U.S. Energy Information Administration, commercial sector, Jan 2023

## Quiet Operation Improves the Work Environment

Designed for noise sensitive areas such as labs and blood banks, Pro Line Incubators and agitators are quieter than traditional models leading to fewer distractions for staff.



*Pro Line incubator models are designed with variable-speed exhausts fans that adjust as needed, providing a quiet work environment for hospital or blood center staff*

Every increase of 10dB on the scale is equivalent to a 10-fold increase in sound intensity (~doubling of the perceived loudness)

# EFFICIENCY AND SUSTAINABILITY



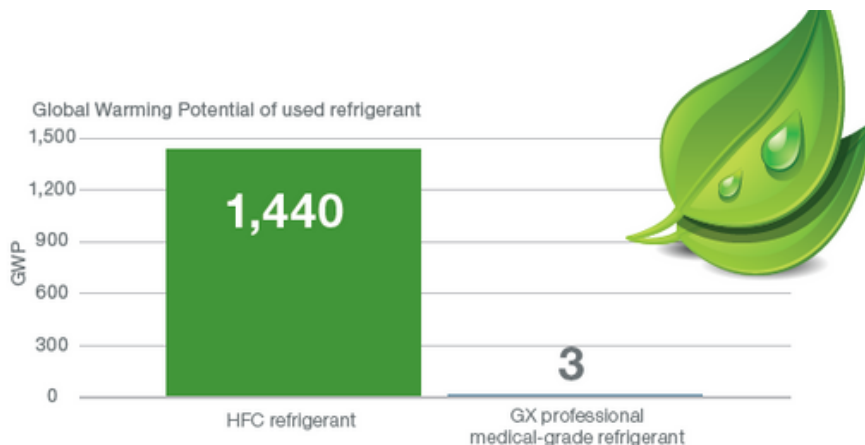
The Pro Line is future-ready and helps blood banks and blood centers meet new environmental standards to reduce the use of HFC refrigerants and support sustainability initiatives.

## Natural refrigerants support sustainability initiatives

The OptiCool™ RT system uses R600a, a naturally occurring refrigerant that helps meet environmental standards. R600a is Environmental Protection Agency (EPA), Significant New Alternatives Policy (SNAP), Montreal Protocol, Paris Climate Agreement, and EU F-Gas compliant. This natural refrigerant is environmentally friendly, having no impact on ozone depletion and a very low Global Warming Potential (GWP) grade.

The use of natural hydrocarbons:

- Reduces heat output - limiting impact on HVAC systems.
- Decreases carbon footprint - natural hydrocarbons dramatically lower global warming potential.
- Meets ever changing energy standards - compliant with many regulatory policies and agreements.

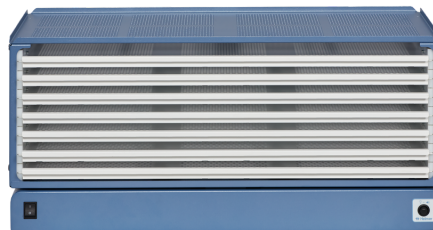




# PRO LINE FLOOR MODEL PLATELET INCUBATORS AND AGITATORS



PC2200-Pro  
Floor Model  
Platelet Incubator



PF96-Pro Platelet Agitator  
(used in PC2200-Pro and  
PC3200-Pro Floor Model  
Platelet Incubators)



PC3200-Pro  
Floor Model  
Platelet Incubator



PC4200-Pro Floor Model  
Platelet Incubator with  
Built-in Agitator

Agitators include pull-out, ventilated drawers which are smooth-gliding and adjustable to enable optimization of storage space for different types of bags and workflows, such as additional tubing, larger clips, and attached documentation.

# INNOVATION IN PLATELET STORAGE FROM THE BRAND HOSPITALS AND BLOOD CENTERS TRUST.

## Helmer Scientific: A Trusted Brand

Helmer Scientific is the most trusted brand for critical temperature-controlled medical storage needs. Hospitals depend on Helmer Scientific as the leader in platelet storage systems\*. We provide these solutions to over 130 countries world-wide.

With **more than 40 years of leadership** in the manufacture of medical storage systems, Helmer Scientific is the recognized industry expert in platelet storage. We know that medical storage solutions are a long-term investment, so we apply our years of expertise to the development and maintenance of products that are made to last. Helmer Scientific purchases come with **support for a minimum of 10 years**, including parts, manuals, and technical and customer service.

### About the Author:



Bringing over 20 years of marketing experience in clinical, pharmacy and life sciences industries, Donna is the Sr. Manager of Marketing Communications at Helmer Scientific. She has successfully developed marketing strategies and tactics integrating inbound and outbound methods, digital, and marketing technology to drive commercial business results.



\*Based on MD Buyline analysis of U.S. Hospitals