

## i.Center® Plus User Guide

For Helmer Pro Line Platelet Incubators

### Floor Model

PC2200-Pro  
PC3200-Pro  
PC4200-Pro



## Document History

Revision	Date	CO	Supersession	Revision Description
A	27 SEPT 2023	26664	n/a	Initial release.

\* Date submitted or change order review. Actual release date may vary.

## Document Updates

The document is furnished for information use only, is subject to change without notice and should not be construed as a commitment by Helmer Scientific. Helmer Scientific assumes no responsibility or liability for any errors or inaccuracies that may appear in the informational content contained in this material. For the purpose of clarity, Helmer Scientific considers only the most recent revision of this document to be valid.

## Support Information

Instructions for Use and Service Manuals provide additional product information. Product manuals are available at [www.helmerinc.com](http://www.helmerinc.com).

## Notices and Disclaimers

The i.Center® Plus User Guide provides information about use of the i.Center Plus. Refer to the product Instructions for Use or Service manual for general information. Refer to the product service manual for additional information about the equipment on which the i.Center Plus is installed.

## Confidential / Proprietary Notices

Use of any portion(s) of this document to copy, translate, disassemble or decompile, or create or attempt to create by reverse engineering or otherwise, the information from Helmer products is expressly prohibited.

## Copyright and Trademark

Copyright © 2023 Helmer, Inc. Helmer®, AgiTrak™, and i.Center®, are registered trademarks of Helmer, Inc. in the United States of America. Helmer, Inc., doing business as (DBA) Helmer Scientific and Helmer.

## Disclaimer

This manual is intended as a guide to provide the operator with necessary instructions on the proper use and maintenance of certain Helmer Scientific products.

Any failure to follow the instructions as described could result in impaired product function, injury to the operator or others, or void applicable product warranties. Helmer Scientific accepts no responsibility for liability resulting from improper use or maintenance of its products.

The screenshots and component images appearing in this guide are provided for illustrative purposes only, and may vary slightly from the actual software screens and/or product components.

Helmer Scientific  
14400 Bergen Boulevard  
Noblesville, IN 46060 USA

[www.helmerinc.com](http://www.helmerinc.com)

Part No. 360436/ Rev A

**Contents**

**1 Overview . . . . . 4**

    1.1 Features . . . . . 4

**2 Using the Touchscreen . . . . . 5**

    2.1 Touch Techniques . . . . . 5

    2.2 Icons, Indicators, and Buttons . . . . . 5

    2.3 Care of the i.Center Plus Screen. . . . . 5

**3 Initial Setup . . . . . 6**

    3.1 Language Configuration . . . . . 6

    3.2 Settings Configuration . . . . . 6

**4 Home Screen Basics . . . . . 7**

    4.1 Home Screen Layout. . . . . 7

    4.2 Home Screen Icons and Indicators . . . . . 7

**5 Min/Max Temperature Monitoring (if enabled). . . . . 8**

**6 i.Center Plus Applications . . . . . 9**

    6.1 Event Log . . . . . 9

    6.2 i.Center Plus Settings . . . . . 11

    6.3 Temperature Graph . . . . . 12

    6.4 Alarm Test . . . . . 14

    6.5 Report Download. . . . . 15

    6.6 Shut Down Display . . . . . 16

    6.7 Contact Information . . . . . 17

    6.8 System Update . . . . . 17

    6.9 AgiTrak . . . . . 18

**7 Customizing i.Center Plus Settings . . . . . 22**

    7.1 Temperature Set Point. . . . . 22

    7.2 Display Settings. . . . . 23

    7.3 Date/Time . . . . . 24

    7.4 Sound Settings . . . . . 25

    7.5 Alarm Settings . . . . . 26

    7.6 Password Configuration . . . . . 27

    7.7 Device Status . . . . . 28

    7.8 Sensor Calibration. . . . . 28

    7.9 Connectivity Settings . . . . . 30

    7.10 Restore Factory Settings. . . . . 30

    7.11 System Functions . . . . . 31

    7.12 Device Control. . . . . 31

**Appendix A - Icon Reference Guide . . . . . 32**

    Common Buttons . . . . . 32

    i.Center Plus Icons . . . . . 33

**Appendix B - i.Center Plus Reference Guide . . . . . 34**

    General Settings. . . . . 34

    Alarm Settings . . . . . 35

# 1 Overview

## NOTICE

- To avoid injury, before using the i.Center Plus User Information Console, read all instructions in the associated product Instructions for Use manual.
- To avoid damage to the i.Center Plus system, read all instructions provided in this user guide.

## 1.1 Features

The i.Center Plus consists of an icon-driven touchscreen with intuitive user interface and additional components for controls and communications. The touchscreen is contained within the instrument bezel, as are additional features.

### Touchscreen Display

The interface to the i.Center Plus system. Displays visual notifications when alarm and other event conditions are met.

### Audio Speaker

Provides an audible signal when alarm conditions are met. Also provides audible signal when screen icons and buttons are touched.

### USB Port

Connect a flash memory device to download system data or upload firmware. This port may be disabled through settings.

### Ethernet/RJ45 Connection

Allows the system to provide and receive data or commands to and from external devices. Located on the back of the device. The port may be disabled through settings.



## 2 Using the Touchscreen

The touchscreen and touch techniques make the i.Center Plus easy to use. Icons, status indicators, and navigation buttons let the user see and respond to i.Center Plus system conditions and events.

### Note

Anything that touches the screen is understood as a command. Do not let anything touch the screen unintentionally.

### 2.1 Touch Techniques

**Touch-select** Touch once to select an item.

**Touch-scroll** To scroll, slide finger slowly across the screen (horizontal or vertical). Stop before lifting. For more control while scrolling, keep your finger in contact with the screen.

### 2.2 Icons, Indicators, and Buttons

For a complete list of all icons and indicators, see the [Icon Reference Guide](#) at the end of this user guide.

**Application icons** serve as navigation buttons to the associated application screen.

**Status indicators** alert the user to a change of status.

**Navigation buttons** return the display to the previous screen or the Home screen.

### 2.3 Care of the i.Center Plus Screen

#### NOTICE

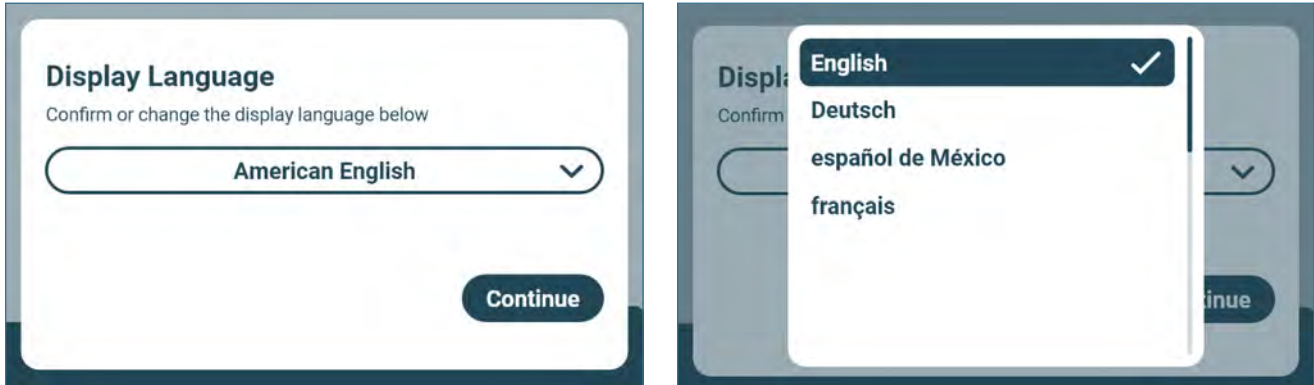
The i.Center Plus screen uses a sensitive touch technology.

- To avoid damage to the touchscreen, do not apply pressure on the front of the display bezel or around the screen borders.
- To preserve optimal touch sensitivity, keep the screen clean of foreign objects. Avoid excessive dust accumulation on the screen.
- Do not expose the i.Center Plus screen to liquids or a harsh environment that contains excessive dust, heat or humidity.
- Clean the i.Center Plus screen with a clean, dry cotton cloth.

### 3 Initial Setup

#### 3.1 Language Configuration

The Language screen is displayed when the i.Center Plus is powered on. Use the Language screen to select the i.Center Plus display language.



#### Note

- English is the default language. Available languages may vary from those shown above.
- The language may also be changed through settings.

#### Choose Language

1. Touch the language drop-down arrow to display the list of available languages.
2. Scroll to select the language to be displayed. The selected language is displayed in the **Language** field.
3. Touch **Continue** to confirm the language selection and return to the Home screen.

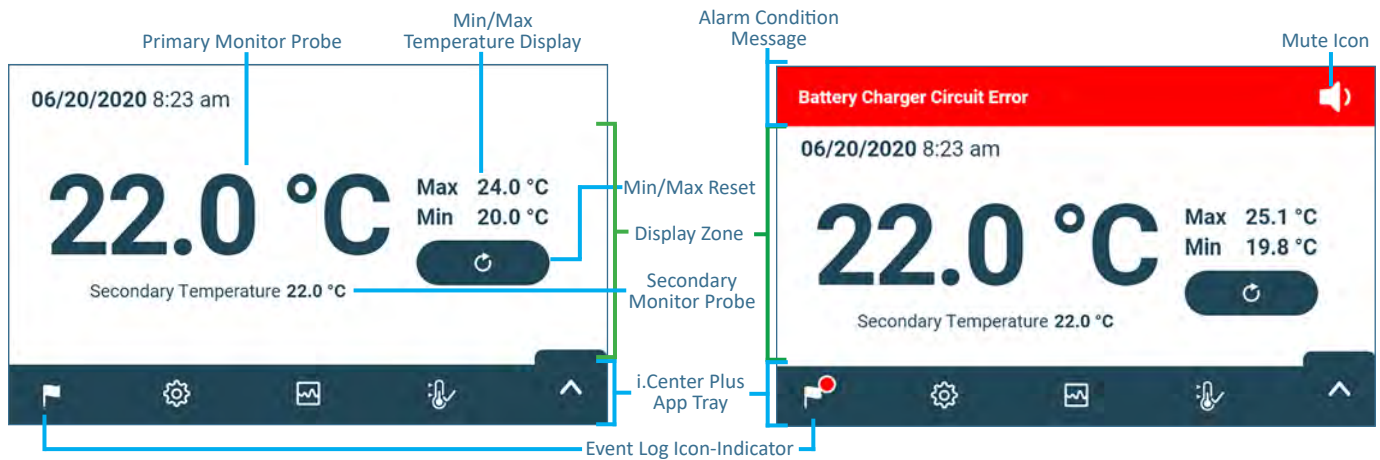
#### 3.2 Settings Configuration

Basic configuration parameters have been set for the i.Center Plus at the factory. If factory default settings need to be adjusted, refer to [Customizing i.Center Plus Settings](#).

## 4 Home Screen Basics

### Note

To temporarily silence active alarms, touch the **Mute** icon in the top right corner of the screen.



### 4.1 Home Screen Layout

The i.Center Plus Home screen is comprised of three information areas:

**Alarm Condition banner** - The red horizontal band across the top of the Home screen appears only when an alarm condition occurs. The banner provides a brief alarm description and Mute icon. The audible alarm may be temporarily muted for a set amount of time by touching the Mute icon.

**Display zone** - The white section of the screen includes the Date and Time, Primary Monitor Probe display, Secondary Monitor Probe display (if applicable), Min/Max Temperature Display and Reset button (if enabled).

### Notes

- **Primary Monitor Probe** refers to the monitoring probe located on the right side of the chamber.
- **Secondary Monitor Probe** is optional on PC3200-Pro and PC4200-Pro models only (located on left side of chamber if installed).
- **Min/Max Temperature Display and Reset** is optional and can be turned ON to show the highest and lowest Primary Monitor probe temperature occurrence within a given period of time.

**App Tray** - Icons located in the tray across the bottom of the Home screen include four factory-preset application icons. From left to right they are: Event Log, Settings, Temperature Graph, and Automatic Alarm Test. The Up Arrow in the right corner provides access to the complete Applications menu.

### Notes

- After two minutes of no interaction, the Temperature Graph screensaver is displayed (if enabled). Touch the screen to clear the screensaver.
- Additional applications are available on the i.Center Plus Applications screen.

### 4.2 Home Screen Icons and Indicators



Touch the **Event Log** icon to navigate to the Event Log screen.



Touch the **Reset** icon to reset the Min/Max display. Time since last reset will be displayed.



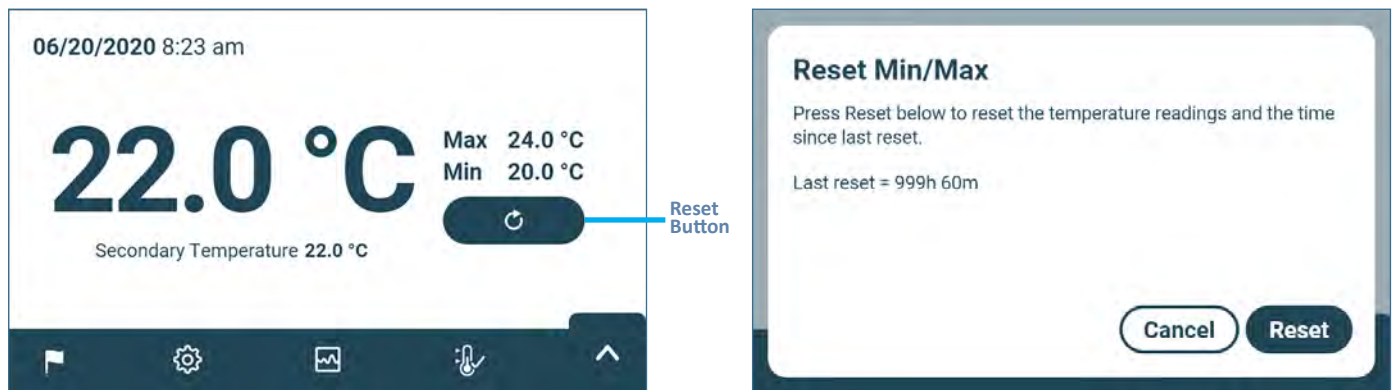
Look for the **New Event** indicator (red asterisk).



Touch the **Mute** icon to temporarily silence alarm sound and see time remaining until audible alarm resumes.

## 5 Min/Max Temperature Monitoring (if enabled)

The Min/Max temperature display shows the highest and lowest Primary Monitor probe temperature occurrence since the last system reset (power-on event) or manually-initiated reset.



### **i** Notes

- The Min/Max temperature display and reset can be turned on or off. Refer to [Display Settings](#) for more information.
- Once the time reaches the maximum display of 999 hours and 60 minutes, the message will display ">999h 60m", but minimum and maximum temperatures will continue to be tracked.

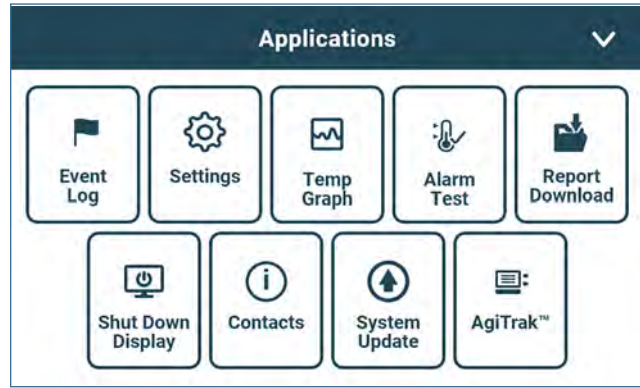
### **✓** Reset Min/Max Temperature

1. Touch the **Reset** button on the Home screen. The "Reset Min/Max" screen is displayed along with the time (in hours and minutes) since the last reset.
2. Touch **Reset** to confirm. The timer is reset to 0m and the minimum and maximum recorded temperature is cleared. Touch **Cancel** to cancel without resetting.



## 6 i.Center Plus Applications

All i.Center Plus Applications can be reached from the i.Center Plus Applications screen by selecting the up arrow located in the lower right corner of the screen. To navigate to an application screen, touch the associated application button.



App	Description	App	Description	App	Description
	Access all available data log applications		Initiate automatic alarm tests for the high and low temperature alarms.		View product support information including the firmware revision numbers.
	All i.Center Plus system settings are configured and other preferences selected from the i.Center Plus Settings screen.		Download historical data.		View the progress of a system update.
	View current and historical primary monitor probe temperature data and alarm events.		Safely shut down the display and stop all monitoring and data logging until the system is restarted.		Control agitator settings and view current agitator status.

### 6.1 Event Log

The Event Log lists information from all past and in-process events.



#### Information Found in the Event Log

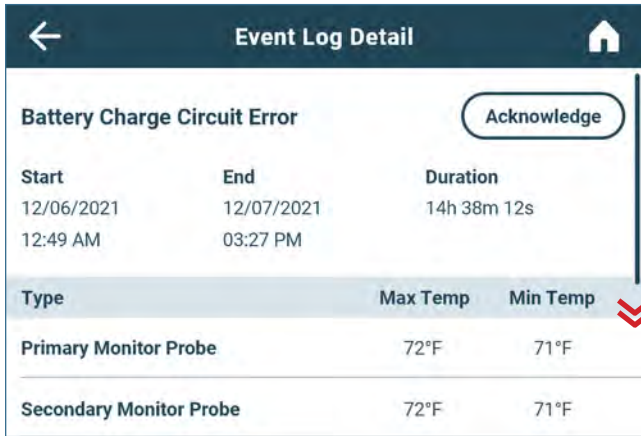
- Event icon and description
- Start date and time
- Indicator of event acknowledgement

#### Event Log Formatting

- Event information not viewed appears in bold text. A blue bar to the left of the event icon is also displayed.
- Normal text indicates event information has been viewed.
- A green check mark appears on the Info action arrow when an event has been acknowledged

#### Viewing the Event Log

1. Select the Event Log icon from the App tray or the Event Log button from the Applications menu. The Event Log screen appears.
2. Use the scroll bar to scroll through the Event Log.
3. Touch Info arrow of the desired Event to navigate to the Event Log Detail screen.



**Event Log Detail Screen**

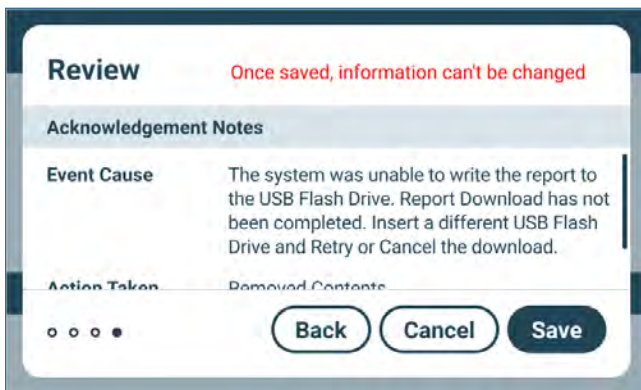
The Event Log Detail provides additional information about an event including temperature information for the primary monitor probe and secondary monitor probe (if applicable). Agitator events include the serial number of the associated agitator and the minimum and maximum speed during the event.

**Event Acknowledgement**

The cause of an alarm event and the corrective action taken can be added by selecting the Acknowledge button and following the prompts.

**Notes**

- If **Other** is selected for the event cause or action taken, the alphanumeric keyboard is displayed. Enter the cause or action taken in the space provided.
- All fields must be completed for data to be saved.

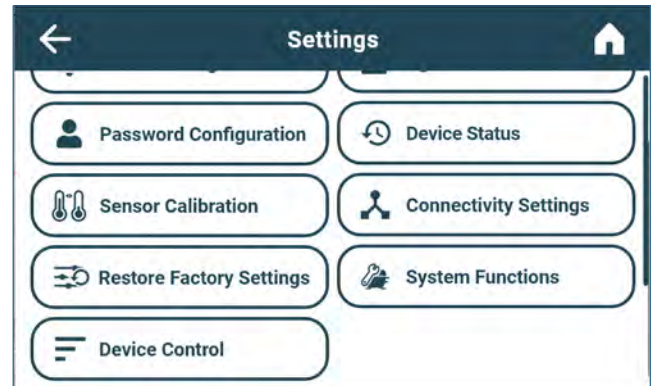
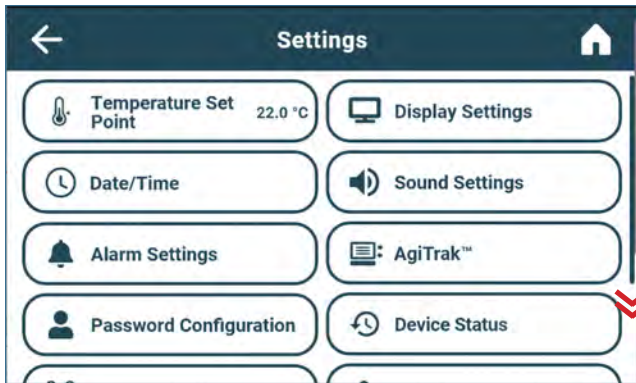


**Acknowledge an Event**

1. Touch the Acknowledge button. The Event Cause screen with a drop-down list is displayed.
2. Select the cause of the alarm event (*Door Open; Alarm Test; Inventory; Other*).
3. Touch the Continue button. The Action Taken screen appears.
4. Touch the Select Action drop-down list and select the action taken to correct the alarm event (*Closed Door; Completed Test; Removed Contents; Other*).
5. Touch the Continue button. The Signature screen appears.
6. Use the alphanumeric keyboard to enter the user name or initials, and touch the return key.
7. Touch the Review button. The Review screen appears displaying the Acknowledgement Notes.
8. Select Save to save the event information entered. The Event Log Detail screen appears with a green check mark next to the Acknowledged button. Select Cancel to return to the Event Log Detail screen without saving event information added.

## 6.2 i.Center Plus Settings

The Settings screen provides access to different groups of settings that control how the device operates and is monitored. Most settings can be viewed without entering a password.



### Accessing Settings

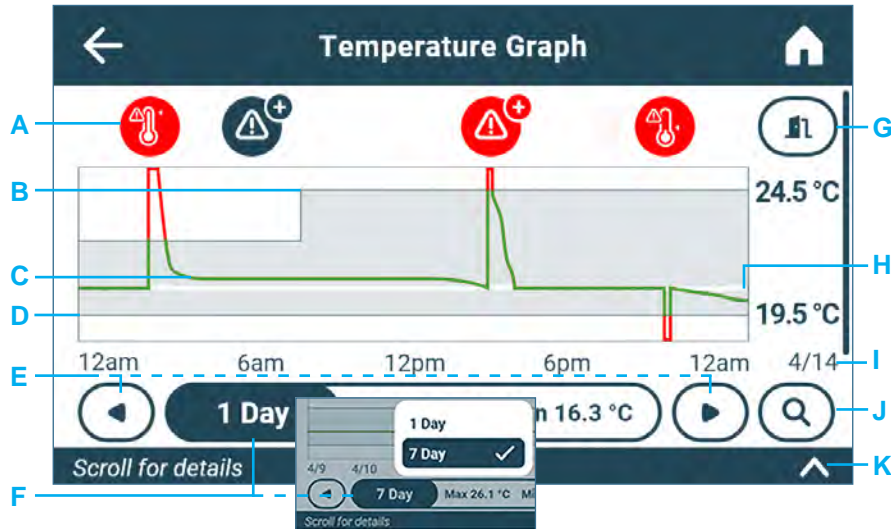
Selecting the Settings icon from the App Tray or touching the Settings button from the Applications menu will open the Settings screen. Making changes to most settings requires the Administrator or Technician level password. For more information regarding viewing and adjusting specific settings, refer to the [Customizing i.Center Plus Settings](#) section.

### 6.3 Temperature Graph

The Temperature Graph screen shows current and historical primary monitor probe temperature data and temperature events in a one day (24 hour) or seven day (168 hour) format.

**Note**

Up to 62 days of historical temperature data can be viewed on the graph.



#### Temperature Graph Features

- A. Event icons appear above the temperature graph. Critical alarms requiring immediate action appear in red. A Plus sign indicates multiple alarm occurrences. Touching an event icon will scroll the screen down to the corresponding event details.
- B. The upper solid line represents the high alarm limit. The shaded area indicates the acceptable temperature conditions between the high (B) and low (D) alarm limits. The current limit values are displayed to the right of the graph.
- C. The continuous temperature graph line turns green when unit is within alarm limits and red when outside alarm limits.
- D. The lower solid line represents the low alarm limit. The shaded area indicates the acceptable temperature conditions between the high (B) and low (D) alarm limits. The current limit values are displayed to the right of the graph.
- E. The left and right arrows shift the time window forward and back.
- F. The time span button offers the ability to toggle between a one day and seven day view.
- G. The Door Open button provides the option to toggle between viewing or hiding door opening events. When enabled, each door opening appears as a solid vertical line on the temperature graph and as an event in the Event Log below the graph.
- H. A horizontal solid white line represents the temperature set point.
- I. Date and time information for the selected time span is displayed along the bottom of the graph.
- J. Selecting the Magnifying Glass icon displays controls to zoom in on a more narrow time window.
- K. The **Scroll for details** indicator signifies event details which may be viewed below the graph by using the scroll bar at the right and scrolling down.

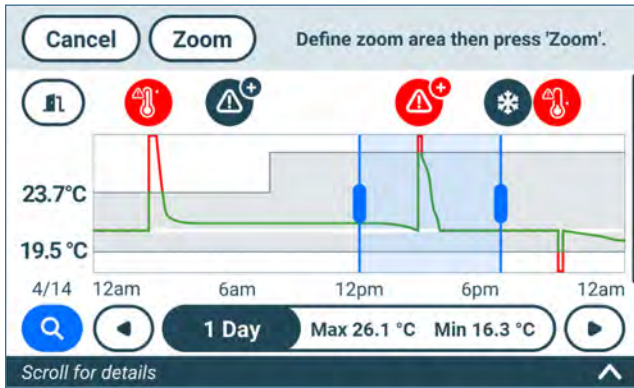
**Notes**

- A system reset or date/time change is represented by a solid vertical black line.
- If the time or date is changed, the stored temperature data will not be reformatted with the new date or time configuration. Logged events may be duplicated in the downloaded event database if the time or date is changed during an active alarm.
- If the high alarm limit or low alarm limit is changed, data recorded before the limit change will continue to be displayed with the former limits shown by the shaded area.

**Viewing the Temperature Graph**

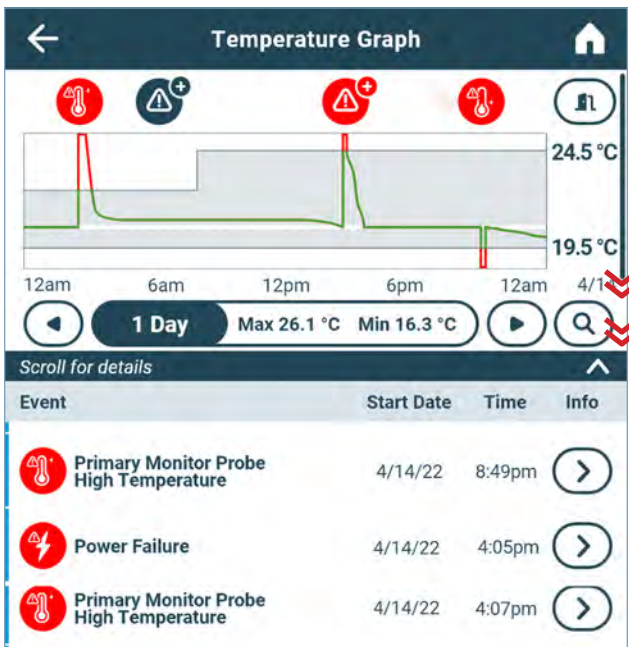
1. From the Home screen, select the Temperature Graph icon in the App Tray, or touch the Temp Graph button in the Applications menu.
2. Touch the graph **Time Span** button to select a 1-day or 7-day time span.





**Zoom in the Temperature Graph**

1. From the Temperature Graph screen, touch the Magnifying Glass icon.
2. Touch and drag the blue handles to select the desired zoom area and touch the Zoom button to zoom in, or Cancel to return the Temperature Graph screen.
3. Touch the Reset button to return to the full view of the Temperature Graph screen.

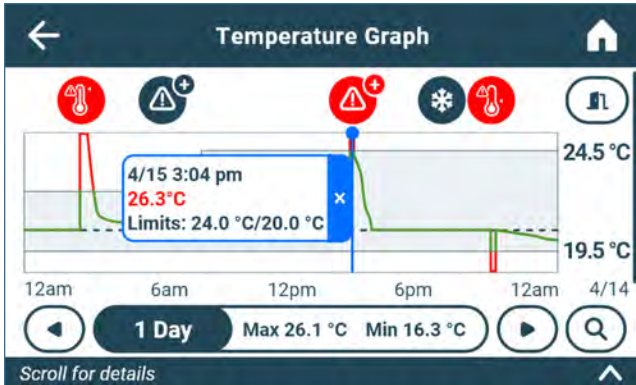


**View Event Data**

1. Touch an event icon above the temperature graph or the *Scroll for details* arrow to view a specific event or series of events. The scroll bar to the right of the screen also provides the ability to view the Event Log for only the visible time window.
2. Touch the **Info** arrow to the right of the event to view Event Log Detail.

### One Touch Quick Information Feature

The one touch quick information feature allows the user to view specific temperature information at any point on the graph.



**Note**

The one touch feature should be used for reference only. The temperature displayed may vary from actual by 0.1 - 0.2 °C.

**Using One Touch**

Touch the desired point on the graph. A dialog box will appear providing selected date, time and temperature data.

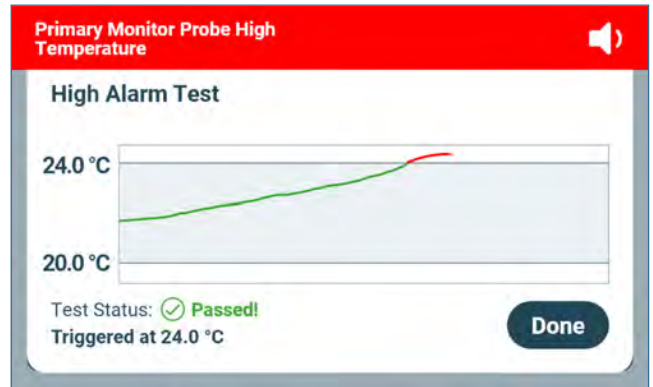
### 6.4 Alarm Test

Initiate an automatic alarm test for high and low temperature alarms using the factory installed self-test probe. Touching the Test button displays the Temperature Alarm Test Operation screen showing the progress of the warming or cooling during the alarm test and activates the corresponding alarm. The process normally takes less than five minutes.

Test Buttons

Temperature Alarm Test			
Name	Last Test	Last Result	Actions
High Alarm Test	Not Tested	---	[>]
Low Alarm Test	Not Tested	---	[>]

Temperature Alarm Test screen



Temperature Alarm Test Operation screen

**Notes**

- The Temperature Alarm test can be accessed from the App Tray or Applications menu.
- Touch the Cancel button at any time to abort the alarm test.
- If the temperature alarm test takes longer than ten minutes, the Test Status message will display Failed.
- At the time of an alarm test, the Alarm Test icon is displayed on the Temperature Graph to show the change in temperature was test-induced. Event data for the alarm test is recorded and a blue Event icon appears in the Event Log.

**Initiate Alarm Test**

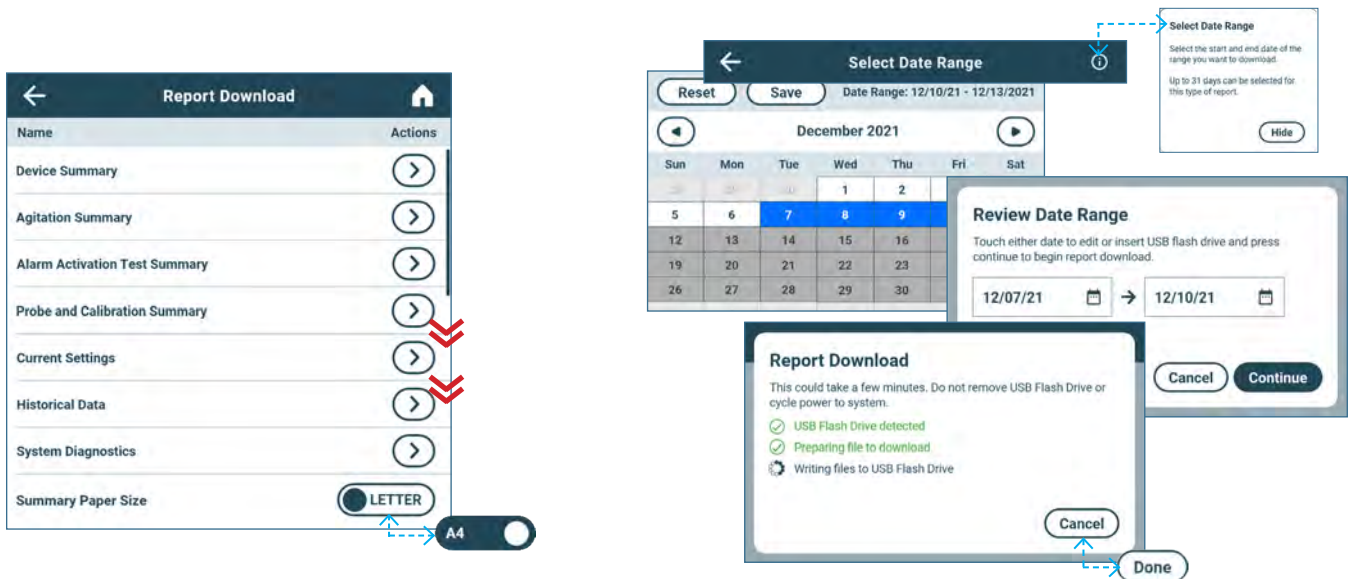
1. Touch the **High Alarm Test** or **Low Alarm Test** button to begin the alarm test. The selected test begins.
  - Temperature changes are displayed in the Temperature Alarm Test Operation screen.
  - As the temperature moves into alarm condition, the temperature line turns red and the alarm activates displaying the banner at the top of the screen.
  - The Test Status message "Warming (or Cooling) Probe" is displayed in the lower left corner of the screen.
  - When completed, the Test Status message will show Passed or Failed. If Passed, the temperature at which the alarm was triggered will be displayed below the Test Status.
2. Select **Done**. The Temperature Alarm Test screen appears showing the date and time of the last test as well as the results.

**Cancel Alarm Test**

Touch the Cancel button to end the alarm test. **Cancel** appears in the **Last Result** field of the Temperature Alarm Test screen.

**6.5 Report Download**

Report Download provides a path to download multiple reports in text, PDF (*Portable Document Format*) or spreadsheet formats so they can be transferred to a computer. File type and data selection vary by report type. Contents vary by product type.



**Notes**

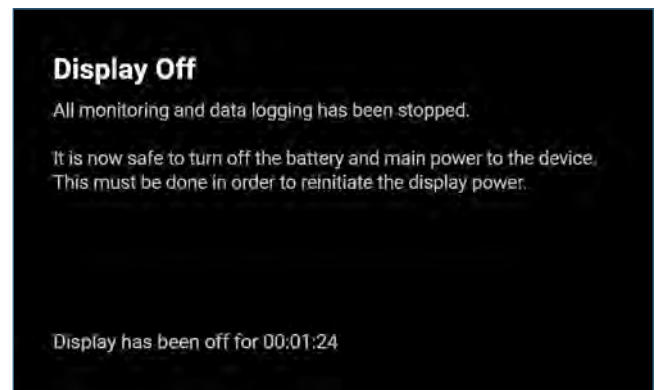
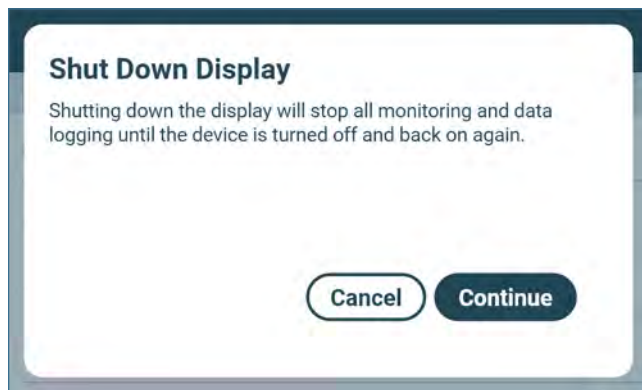
- Ensure the USB port has been turned on in Connectivity Settings prior to downloading a report.
- Ensure the flash drive has at least 1 MB of memory available for report download.
- Encrypted flash drives are not supported by the i.Center Plus system.
- The Device Summary, Agitation Summary, Alarm Activation Test Summary and Historical Data reports require a date range to be selected.
- Up to 31 days can be selected for reports that require a date range.
- Days without recorded data can not be selected.
- If the Report Download screen appears before a flash drive is inserted, the message "Insert USB Flash Drive" is displayed until a flash drive is inserted.
- If the Cancel button is selected during the report download process, the user is returned to the Report Download screen.
- A report download should be completed in less than twenty minutes. If the download has not completed in twenty minutes, contact Helmer Technical Service.
- If an error occurs with the flash drive during download, an error messages will appear with additional instructions.
- The i.Center Plus features two Disk Space status alarms to proactively alert you when the available storage space is low (about 3 months worth of data can be stored), and full (no new data can be stored; existing data are not overwritten).

### Download Report

1. Insert a flash drive into the USB port.
2. From the Applications screen, select the Report Download button. The Report Download screen appears.
3. Scroll to the bottom of the Report Download screen to select the Summary Paper Size.
4. Touch the desired reports Actions arrow. The Select Date Range screen appears *(if applicable)*.  
If the date range is not required, proceed to Step 8.
5. Use the left and right arrows to select the month, then touch the desired start and end dates. The dates are highlighted on the calendar and the screen banner changes showing the selected date range and Reset and Save buttons.
6. Touch Save to save the date range. *(The Reset button will clear the highlighted dates.)*
7. The Review Date Range screen appears. Select Continue to begin the report download.
8. The Report Download status screen appears displaying the progress of the download.
9. Once the download process is complete, select the Done button to return to the Report Download screen.
10. Remove the flash drive from the USB port.

## 6.6 Shut Down Display

The Shut Down Display screen provides the user the ability to safely shut down the display prior to powering down the unit. A warning statement appears alerting the user data logging and monitoring will stop until the unit is restarted.



### Note

The Shut Down Display option can also be accessed through Device Control settings.

### Shutting Down the i.Center Plus Display

Touching the Shut Down Display button from the Application menu opens the Shut Down Display screen. Once the Continue button is pressed, the process completes and the Display Off screen appears instructing the user it is safe to turn off main and backup power to the unit.



### 6.7 Contact Information

Contact and device information can be found on the Contacts screen. Additional device information and links are also available from this screen.



#### Viewing Contact Information

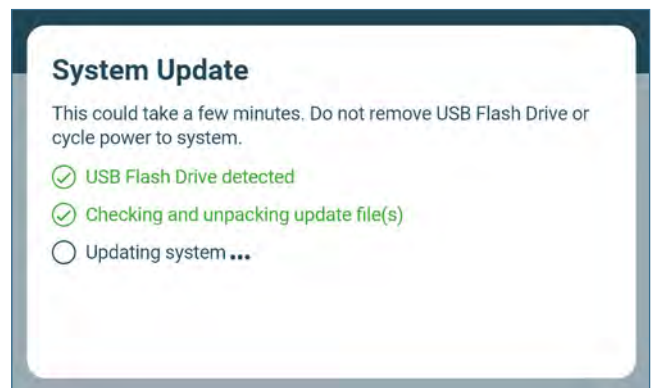
1. Open the Contacts screen by touching the Contacts button from the Application menu.
2. a) For support documentation from the Helmer website, scan the QR code.  
 b) For more device information, such as firmware versions and network settings, touch the More Device information button.

### 6.8 System Update

Use the System Update screen to upload firmware updates.

#### Notes

- Record the display processor and control processor firmware version numbers from the Contacts screen before uploading a firmware update. These numbers will be referenced after the update to ensure the update was successful.
- Ensure the USB port has been turned on in Connectivity Settings prior to downloading a report.
- If the System Update screen appears before a flash drive is inserted, the message "Insert USB Flash Drive" appears.
- Setting values will be maintained as a result of a System Update unless disclosed in the update instructions.
- Once the **Updating system** process begins, it cannot be cancelled.
- If an error occurs during the System Update, an error message will appear with additional instructions.



#### Upload Firmware

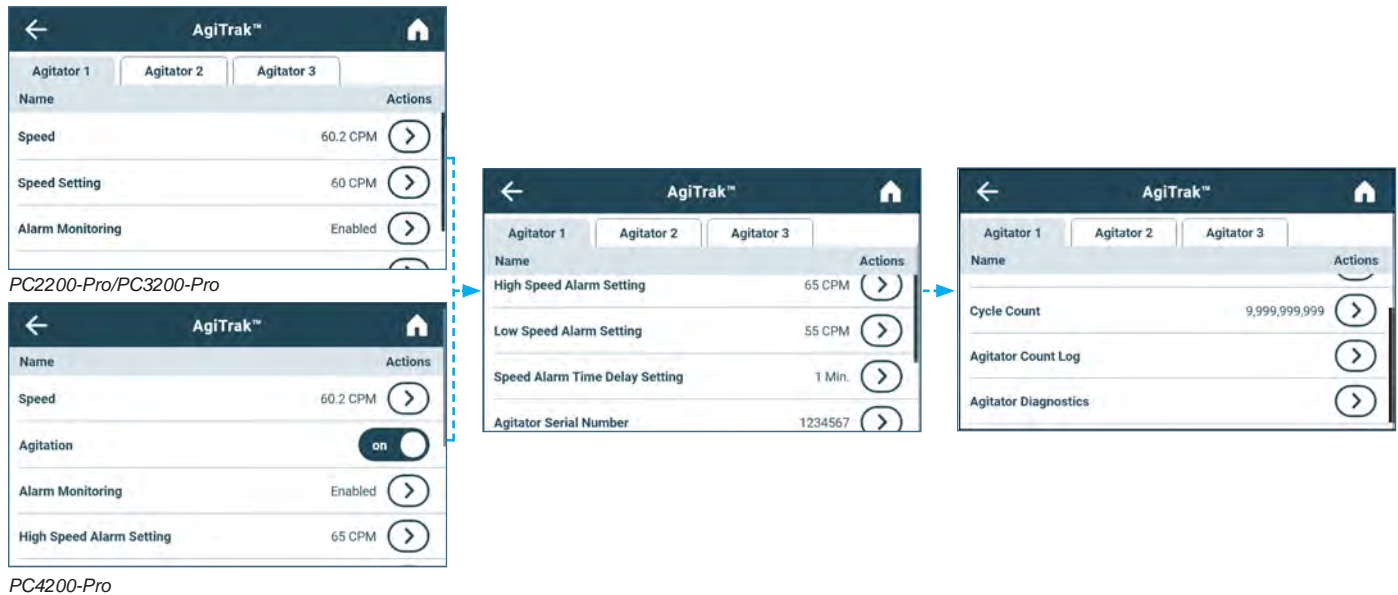
1. Insert a Flash Drive into the USB port.
2. From the Applications screen touch the System Update button. The System Update screen appears.
  - a) Progress dots travel back and forth to indicate a step is in progress.
  - b) Completed steps are acknowledged with a check mark and text appearing in green.
3. Once all steps are completed, a black screen with a progress bar appears revealing the status of the update.
4. The system will automatically reboot once the update is complete.
5. Remove the Flash Drive from the USB port. Updated firmware is loaded to the i.Center Plus memory.

## 6.9 AgiTrak

AgiTrak provides monitoring and control for an installed agitator(s) or built-in agitator. The AgiTrak setup and information screens allow the user to setup and manage each installed agitator. Scroll through the options and use the Actions arrows to select the information to be viewed or changed.

**Note**

- AgiTrak can also be accessed through the i.Center Plus Settings screen.
- Screen contents vary by product type.



Monitoring features allow the user options to monitor the status of each installed agitator. Setup features allow the user to enable or disable an agitator and control the agitator's speed. Associated alarm settings may also be reviewed and changed. The Administrator password must be entered prior to making changes to a setting. The Technician password must be entered prior to viewing diagnostics.

**Notes**

- Multiple actions can be taken after entering a valid password. Once the AgiTrak screen is exited, the password must be re-entered to view settings or make changes.
- The default Administrator password is 1234.
- The position number in AgiTrak corresponds to the position switch setting on the agitator. (PC2200-Pro and PC3200-Pro units only).

**AgiTrak Monitoring Options**

- **Speed** - A Speed Graph is displayed showing the agitator speed in Cycles per Minute (CPM) for the most recent 24 hours. Historical data is not stored. Current speed as well as the minimum and maximum speeds which occurred during that period appear at the bottom of the screen. Door openings can also be viewed on the graph by touching the Door Open icon. The Zoom feature allows a defined area of the graph to be magnified.
- **Agitator Count Log** - The Count Log displays each cycle count event by serial number, date and time of reset and cycle count before the reset.
- **Agitator Diagnostics** (Technician password required) - The Diagnostics screen provides the real time status of the functionality of a selected agitator.



**View Agitator Speed**

1. Select the tab of the corresponding agitator (PC2200-Pro or PC3200-Pro only).
2. Touch the Speed Actions arrow. The corresponding agitator Speed Graph appears.
3. Touch the back arrow to return to the AgiTrak screen, or the Home button to return to the Home screen.

**View Agitator Count Log**

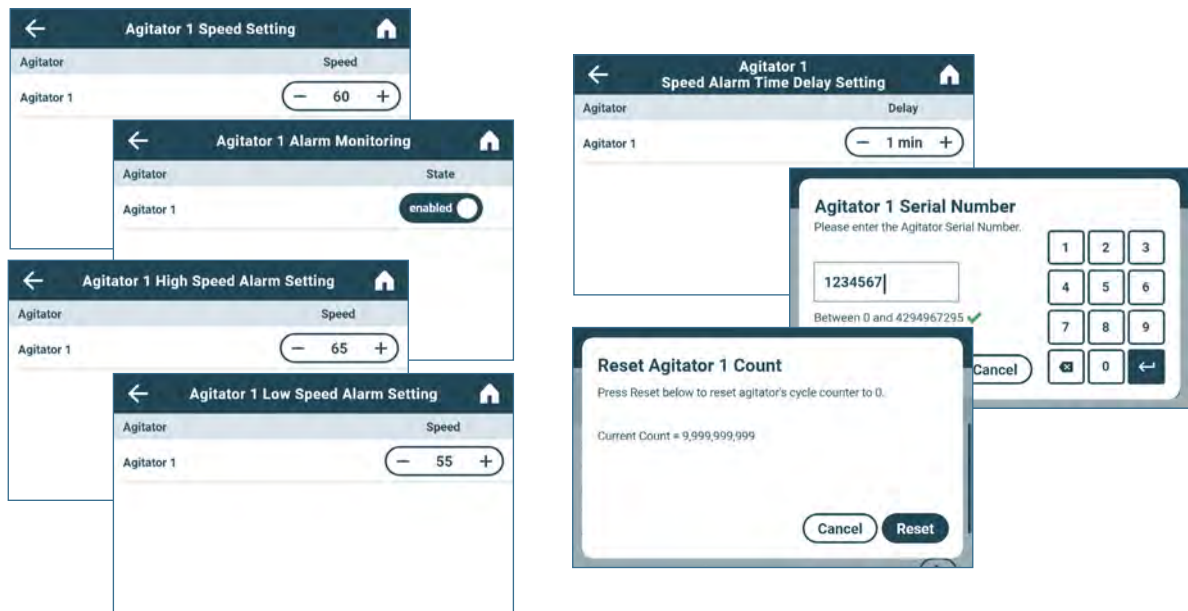
1. Touch the Agitator Count Log Actions arrow. The Agitator Count Log is displayed.
2. Touch the back arrow to return to the AgiTrak screen, or the Home button to return to the Home screen.

**View Agitator Diagnostics**

Agitator Diagnostics provides diagnostic and service information and requires a Technician level password. Contact Helmer Technical Service for more information.

**AgiTrak Settings Options**

- **Speed Setting** (PC2200-Pro and PC3200-Pro) - Touch minus (-) or plus (+) to make agitator speed adjustments.
- **Agitation** (PC4200-Pro) - Touch the on/off button to turn agitation on or off. Select Continue to confirm or Cancel to return to the previous screen.
- **Alarm Monitoring** - Touch the enable/disable button to turn Alarm Monitoring on or off.
- **High Speed Alarm Setting** - Touch minus (-) or plus (+) to make agitator high speed alarm adjustments.
- **Low Speed Alarm Setting** - Touch minus (-) or plus (+) to make agitator low speed alarm adjustments.
- **Speed Alarm Delay** - Touch minus (-) or plus (+) to make agitator speed alarm time delay adjustments.
- **Agitator Serial Number** (PC2200-Pro and PC3200-Pro) - Use the numeric keypad to enter the agitator serial number and select enter to confirm and return to the previous screen.
- **Cycle Count** - Select the Reset button to reset the cycle count or cancel to return to the previous screen. *(Intended for use after maintenance is performed.)*



**Notes**

- All settings are password protected and can only be changed by entering the Administrator or Technician password.
- Multiple actions can be taken after entering a valid password. Once the AgiTrak screen is exited, the password must be re-entered to view settings or make changes.
- The default Administrator password is 1234.

**PC2200-Pro and PC3200-Pro Only**

- The alarm switch on an installed Pro Line Platelet Agitator must be in the OFF position in order to disable Alarm Monitoring within AgiTrak. Alarm Monitoring is enabled and cannot be changed if the alarm switch is in the ON position.
- The position number in AgiTrak corresponds to the position switch setting on the agitator.
- Speed settings can be adjusted through AgiTrak for installed Pro Line agitators. This setting overrides the setting on the individual agitator speed control.
- Agitation can be turned on or off using the controls on the agitator.

**PC4200-Pro Only**

- Agitation can be turned on or off through AgiTrak. Agitation speed is adjustable through hardware setting. Refer to Pro Line Floor Model Incubator Service Manual for further instruction.

**Set Agitator Speed (PC2200-Pro and PC3200-Pro)**

1. Touch the Agitator Speed Setting Actions arrow. The Agitator Speed Setting screen appears
2. Touch the minus (-) or plus (+) on the Speed spin box to select the desired speed.
3. Touch the back arrow to return to the AgiTrak screen.

 **Enable Agitation (PC4200-Pro)**

Toggle the on/off switch on the AgiTrak screen to select the desired setting.

 **Set Agitator High Speed Alarm**

1. Touch the High Speed Alarm Setting Actions arrow. The Agitator High Speed Alarm Setting screen appears
2. Touch the minus (-) or plus (+) on the Speed spin box to select the desired high alarm speed.
3. Touch the back arrow to return to the AgiTrak screen.

 **Set Agitator Low Speed Alarm**

1. Touch the Low Speed Alarm Setting Actions arrow. The Agitator Low Speed Alarm Setting screen appears
2. Touch the minus (-) or plus (+) on the Speed spin box to select the desired low alarm speed.
3. Touch the back arrow to return to the AgiTrak screen.

 **Set Agitator Speed Alarm Time Delay**

1. Touch the Speed Alarm Time Delay Setting Actions arrow. The Agitator Speed Alarm Time Delay Setting screen appears.
2. Touch the minus (-) or plus (+) on the Delay spin box to select the desired alarm time delay.
3. Touch the back arrow to return to the AgiTrak screen.

 **Enter Agitator Serial Number (PC2200-Pro and PC3200-Pro)**

The Agitator Serial Number is detected automatically upon connection. Changes to the serial number requires a Technician level password. Contact Helmer Technical Service for more information.

 **Reset Cycle Count**

1. Touch the Cycle Count Actions arrow. The Reset Agitator Count screen appears.
2. Touch the Reset button to reset the count to 0.
3. Touch the back arrow to return to the AgiTrak screen.

## 7 Customizing i.Center Plus Settings

Most settings can be viewed without entering a password. Password Configuration, Connectivity Settings, Restore Factory Settings and System Functions screens are all password protected.



### 7.1 Temperature Set Point

The Temperature Set Point specifies the desired temperature for product stored inside the unit.



**Notes**

- The Administrator password or Technician password is required to make changes to the Temperature Set Point.
- The default Administrator password is 1234.

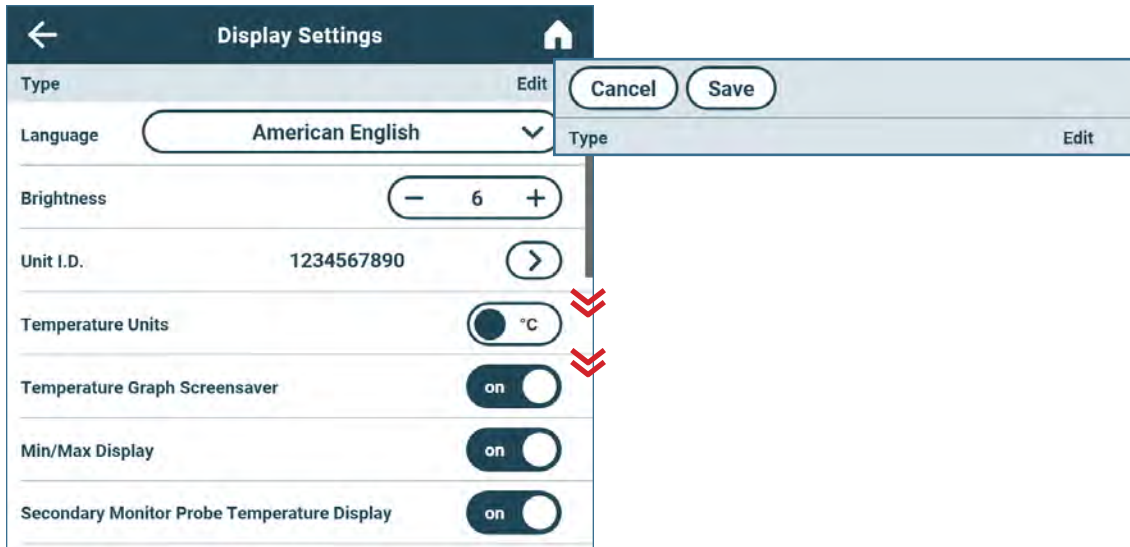
**Change Temperature Set Point**

1. Select the Temperature Set Point Button. The Temperature Set Point screen appears.
2. Touch the Actions arrow. The Enter Password screen appears.
3. Use the keyboard to enter the password. The Temperature Set Point action screen appears.
4. Touch the minus (-) or plus (+) on the spin box to adjust the temperature set point.
5. Touch the Save button to save the new set point and return to the Temperature Set Point screen.



## 7.2 Display Settings

Control how information appears on the i.Center Plus display and in Reports through Display Settings.



### Notes

- The Administrator password or Technician password is required to make changes to Display Settings. Multiple changes can be made after entering the password. Once changes have been saved, the password must be re-entered to make additional changes.
- Numeric formatting is controlled by the Language selected.
- The default Administrator password is 1234.

### Change Language

1. Touch the Language drop-down arrow. The Language menu appears.
2. Select the desired language. The selected language is displayed in the Language button.

### Change Brightness

Touch the minus (-) or plus (+) on the spin box to adjust the screen brightness.

### Enter Unit ID

1. Touch the Unit ID edit arrow. An alphanumeric screen appears
2. Enter a unique Unit ID and touch the return key. The Unit ID appears on the Display Settings screen.

### Select Temperature Units

Toggle the Temperature Units switch to select °C or °F.

### Enable/Disable Temperature Graph Screensaver

Toggle the Temperature Graph Screensaver switch to turn the screensaver **on** or **off**.

### Enable/Disable Min/Max Display

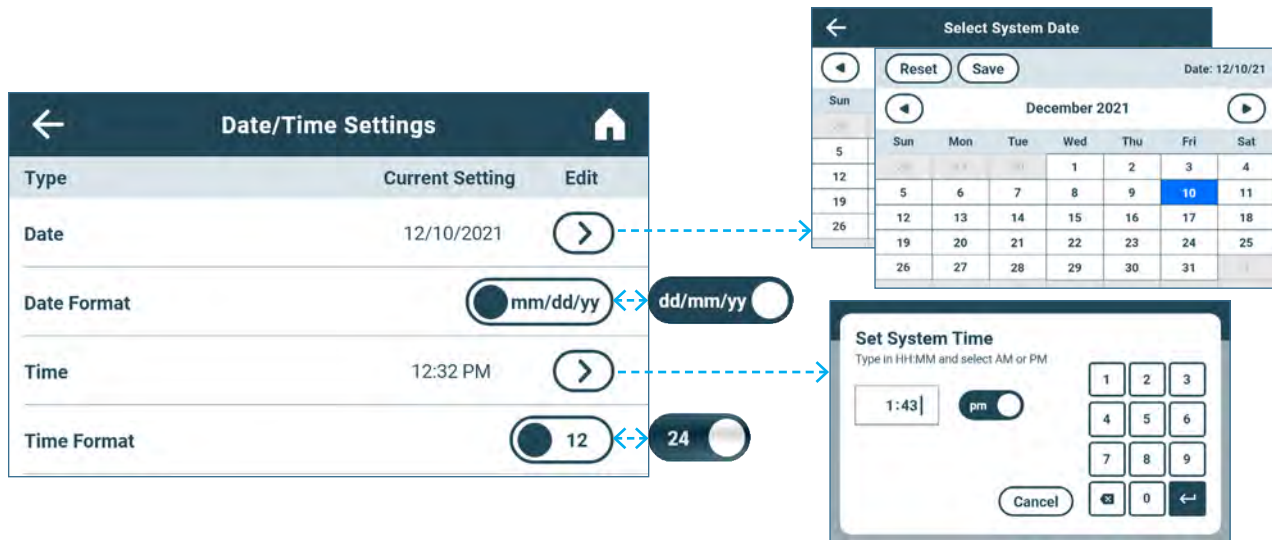
Toggle the Min/Max Display switch to turn the Min/Max Display **on** or **off**.

### Enable/Disable Secondary Monitor Probe Temperature Display (if installed)

Toggle the Secondary Monitor Probe Temperature Display switch to turn the Secondary Monitor Probe Temperature Display **on** or **off**.

### 7.3 Date/Time

The Date/Time Settings screen allows the user to enter the date and time and select the format in which they will appear on the i.Center Plus and in the Reports.



#### **i** Notes

- The Administrator password or Technician password is required to make changes to Date/Time Settings. Multiple changes can be made after entering the password. Once changes have been selected and the Date/Time Settings screen exited, the user must re-enter the password to make additional changes.
- The default Administrator password is 1234. The default Technician password is 5354.

#### **✓** Select Date

1. Select the Date Edit arrow. The Select System Date calendar appears.
2. Use the forward and back arrows to select the month, then touch the date. The screen banner displays the selected date.
3. Touch Reset to clear the calendar selection or the Save button to save the date. The Date/Time Settings screen appears with the new setting.

#### **✓** Select Date Format

Toggle the Date Format button to select the desired format.

#### **✓** Select Time

1. Select the Time Edit arrow. The Set System Time screen appears with a numeric keyboard.
2. Use the keyboard to enter the current time and toggle the am/pm switch (*available only in 12 hour format*) to select the time of day.
3. Touch the enter key to save. The Date/Time Settings screen appears with the new setting.

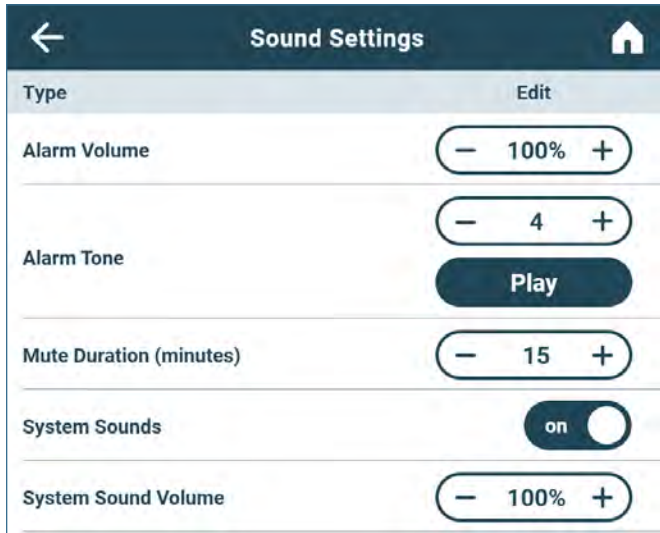
#### **✓** Select Time Format

Toggle the Time Format button to select the desired format.



## 7.4 Sound Settings

Control audible alarm characteristics and other system sounds like those for button touches through the Sound Settings screens.



### Notes

- The Administrator password or Technician password is required to make changes to Sound Settings. Multiple changes can be made after entering the password. Once changes have been selected and the Sound Settings screen exited, the user must re-enter the password to make additional changes.
- The default Administrator password is 1234. The default Technician password is 5354.

### Set Alarm Volume

Touch the minus (-) or plus (+) on the **Alarm Volume** spin box to select desired volume.

### Select Alarm Tone

1. Touch the plus minus (-) or plus (+) on the **Alarm Tone** spin box to select desired tone.
2. Touch the **Play** button to hear the selected tone at the selected volume.

### Set Mute Duration

Touch the plus minus (-) or plus (+) on the **Mute Duration** spin box to select desired amount of time in minutes.

### Enable/Disable Sounds

Toggle the **System Sounds** button **On** or **Off** to select desired setting.

### Set System Sound Volume

Touch the minus (-) or plus (+) on the **System Sound Volume** spin box to select desired volume.

## 7.5 Alarm Settings

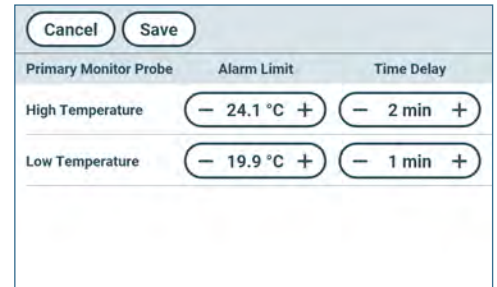
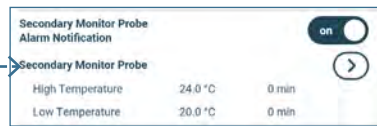
Parameters for activating an alarm may be set through Alarm Settings.

### Notes

- The Administrator password or Technician password is required to make changes to Alarm Settings. Multiple changes can be made after entering the password. Once changes have been selected and the Alarm Settings screen exited, the user must re-enter the password to make additional changes.
- The default Administrator password is 1234. The default Technician password is 5354.
- If a Secondary Monitor Probe is installed, additional alarm settings will appear on the Alarm Settings screen and may be turned on or off.
- Refer to the AgiTrak section for more information regarding setting agitation speed alarms.



Alarm Settings screen



Alarm Settings action screen

### Set Primary Probe Alarm Parameters

1. Touch the Primary Monitor Probe Actions arrow. The enter password screen appears.
2. Use the keyboard to enter the password (default password is "1234"). The Alarm Settings action screen appears.
3. Touch the minus (-) or plus (+) on the corresponding high or low temperature Alarm Limit spin box to change the alarm set point.
4. Touch the minus (-) or plus (+) on the corresponding high or low temperature Time Delay spin box to change the alarm time delay.
5. Touch the Save button to save the settings and return to the Alarm Settings screen.

### Set Secondary Probe Alarm Parameters (if installed)

1. Touch the Secondary Monitor Probe Actions arrow. The enter password screen appears.
2. Use the keyboard to enter the password (default password is "1234"). The Alarm Settings action screen appears.
3. Touch the minus (-) or plus (+) on the corresponding high or low temperature Alarm Limit spin box to change the alarm set point.
4. Touch the minus (-) or plus (+) on the corresponding high or low temperature Time Delay spin box to change the alarm time delay.
5. Touch the Save button to save the settings and return to the Alarm Settings screen.

### Enable/Disable Secondary Monitor Probe Alarm Notification (if installed)

1. Toggle the **Secondary Monitor Probe Alarm Notification** button **On** or **Off** to select desired setting.
  - a) In the On position, the Secondary Monitor Probe alarm settings and Actions arrow are enabled.
  - b) In the Off position, the Secondary Monitor Probe alarm settings and Actions arrow are disabled.

### Set Power Failure Time Delay

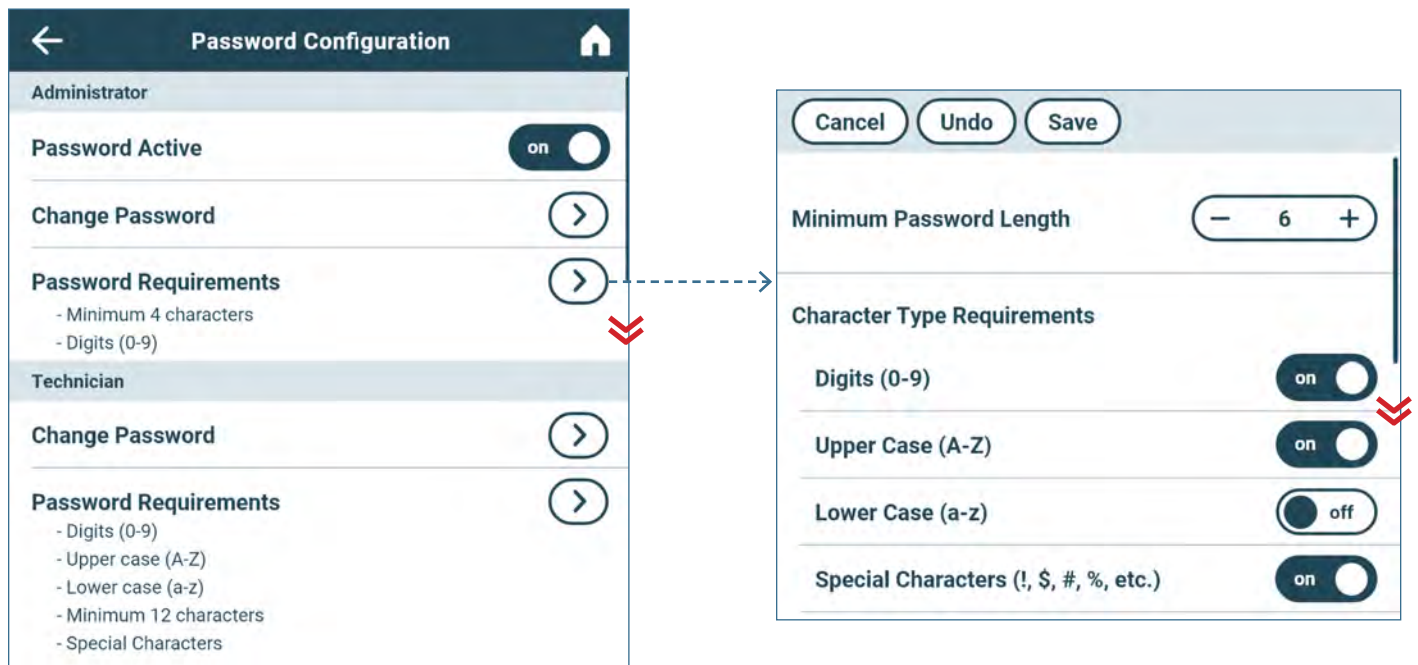
1. Touch the Power Failure Actions arrow.
2. Touch the minus (-) or plus (+) on the corresponding power failure time delay spin box to set the alarm time delay.
3. Select the Save button to save the new setting and return to the Alarm Settings screen.

### Set Door Open Time Delay

1. Touch the Door Open Actions arrow.
2. Touch the minus (-) or plus (+) on the corresponding door open time delay spin box to set the alarm time delay.
3. Select the Save button to save the new setting and return to the Alarm Settings screen.

## 7.6 Password Configuration

Password protection prevents unauthorized changes to i.Center Plus settings. Units are shipped from the factory with Password protection turned on. Password requirements can be set to match conventions used elsewhere at your facility. This feature can be turned off through the Settings menu.



### Notes

- Helmer recommends password protection remain on.
- If the Administrator Password has been previously turned off, configuration options can be accessed without a password for Administrator level password configuration options only.
- The Technician password must be entered to make changes to the Technician level password configuration options. Changes to Administrator level password configuration options may also be made with a Technician level password.
- Passwords created must meet the designated Password Requirements.
- Multiple changes can be made after entering the password. Once changes have been selected and the Password Configuration screen exited, the user must re-enter the password to make additional changes.
- The default Administrator password is 1234.

### Enable/Disable Administrator Password

1. Toggle the **Password Active** button **On** or **Off** to select desired setting.

### Change Administrator/Technician Password

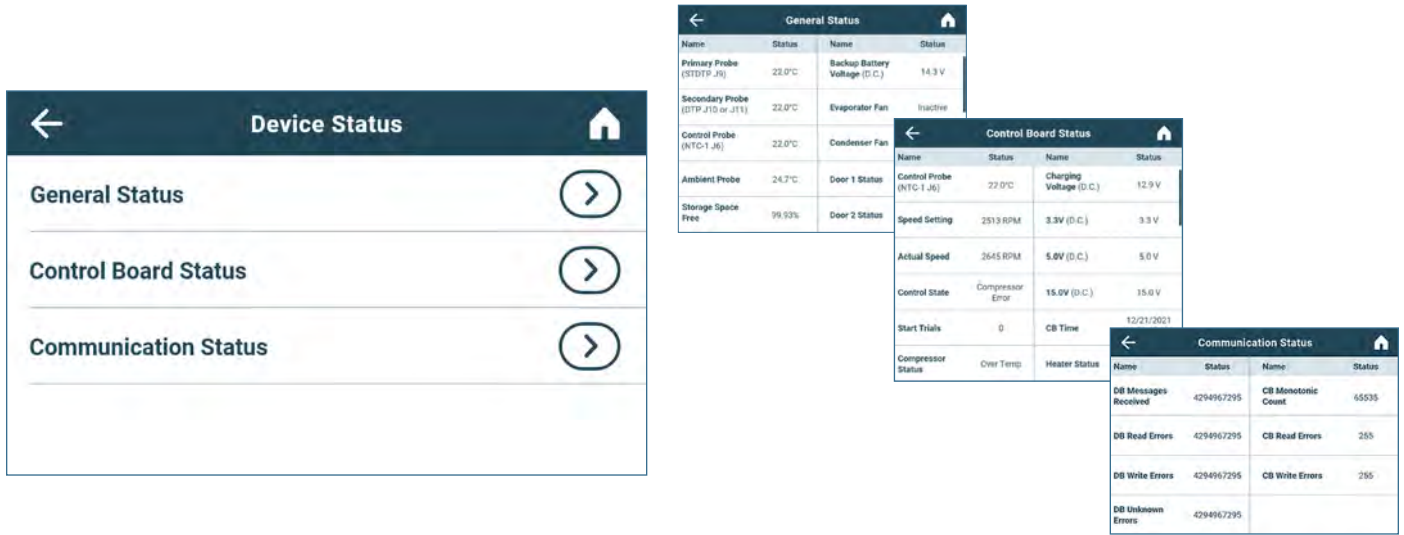
1. Touch the Change Password Actions arrow. The Change Admin. Password or Change Tech Password screen appears.
2. Tap in the space provided to enter a new password. A keyboard appears.
3. Enter the new password meeting the established password requirements and touch the return button. The Confirm Password screen appears.
4. Re-enter the new password. The Success screen appears.
5. Touch the Done button to return to the Password Configuration screen.

### Set Password Administrator/Technician Requirements

1. Touch the Password Requirements Actions arrow. The Admin Password Requirements screen or Tech Password Requirements screen appears.
2. Touch the minus (-) or plus (+) on the Minimum Password Length spin box to select the desired minimum password length (4 to 20 characters).
3. Toggle the desired Character Type Requirements buttons on or off to select the desired password character requirements.
4. Select the back arrow to return to return to the Password Configuration screen.

### 7.7 Device Status

The Device Status screen provides a view of the current operation status of the unit to assist with diagnostics.

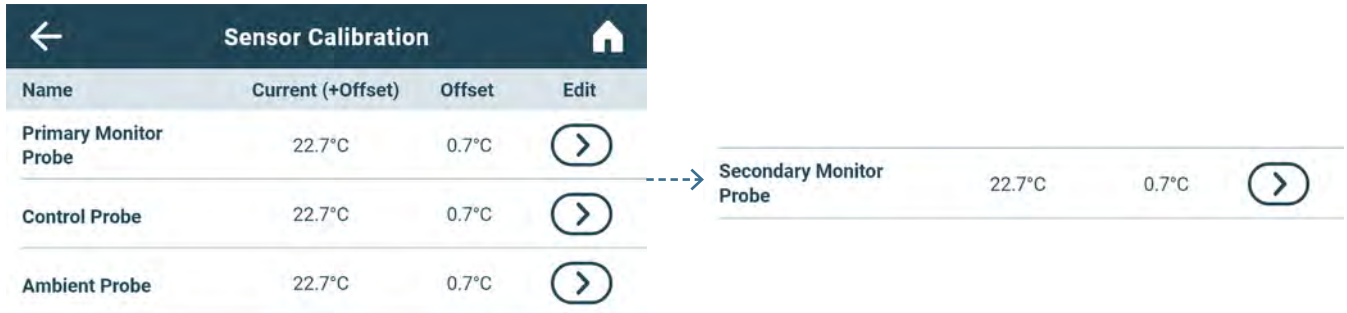


**View Status**

1. Touch the desired Device Status Actions arrow. The corresponding Device Status screen appears.
2. Select the back arrow to return to return to the Device Status screen or the Home icon to return to the Home screen.

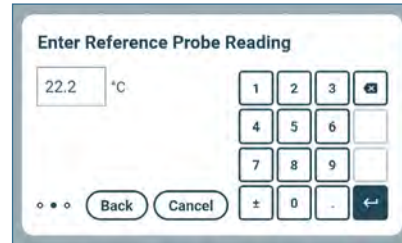
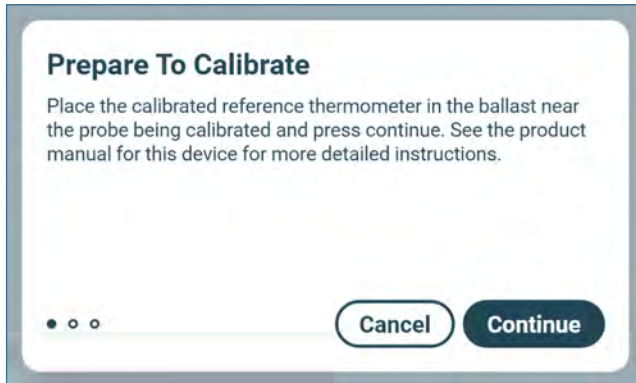
### 7.8 Sensor Calibration

View current temperature readings and offset values. If the Administrator level password is entered, a Sensor Calibration wizard provides instruction for calibration.



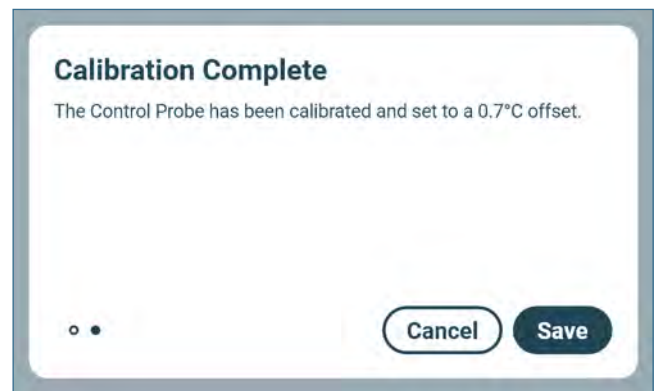
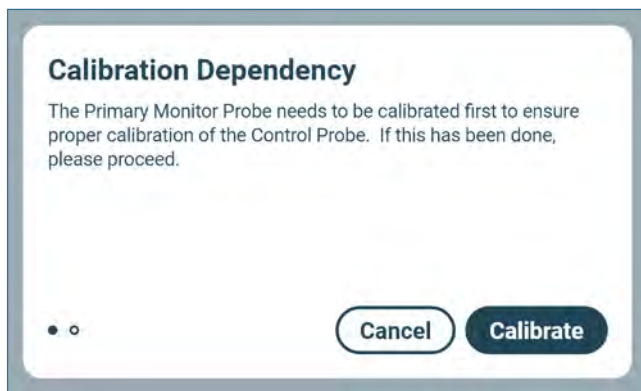
**Notes**

- If a Secondary Monitor Probe is installed, sensor calibration options will appear on the Sensor Calibration screen.
- The Administrator password or Technician password is required to make changes to temperature offsets to the Primary Monitor Probe, Secondary Monitor Probe (if installed) and the Control Probe. The Technician password is required to make changes to the Ambient Probe.
- Multiple changes can be made after entering the password. Once changes have been saved and the Sensor Calibration screen exited, the user must re-enter the password to make additional changes.
- The default Administrator password is 1234.
- A reference thermometer may be needed to perform calibrations.
- Calibrations may need to be performed in a specific order.



**Calibrate Primary/Secondary Monitor Probe**

1. Select the Primary or Secondary Monitor Probe Edit arrow. The Prepare to Calibrate screen appears.
2. Follow the instructions provided on the screen and touch the Continue button. The Enter Reference Probe Reading screen appears.
3. Use the numeric keypad to enter the reference probe temperature reading and touch the return key. The system will calculate the offset value and the Calibration Complete screen appears.
4. Touch the Save button to save the new offset. The Sensor Calibration screen appears with the new offset.



**Note**

Adjusting the Control Probe offset manually for service or diagnostic purposes requires a Technician level password. Contact Helmer Technical Service for information regarding manual calibration of the Control Probe.

**Calibrate Control Probe**

1. Select the Control Probe Edit arrow. The Calibration Dependency screen appears.
2. Follow the instructions provided on the screen and touch the Calibrate button. The system applies the Primary Monitor Probe offset calculated to the Control Probe and the Calibration Complete screen appears.
3. Touch the Save button to save the new offset. The Sensor Calibration appears.

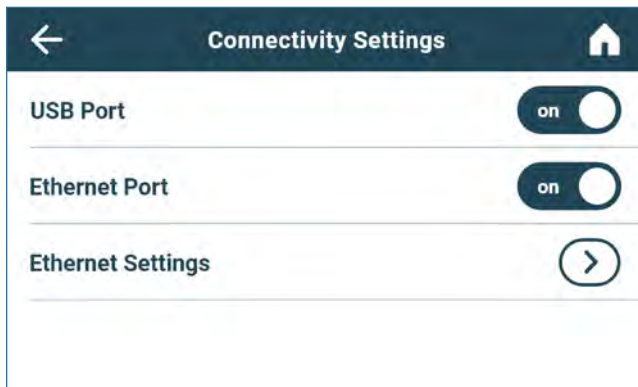
**Calibrate Ambient Probe**

Calibration of the Ambient Probe is optional for information purposes only and requires a Technician level password. Contact Helmer Technical Service for information regarding calibration of the Ambient Probe.



### 7.9 Connectivity Settings

View or change communication connectivity settings through the Connectivity Settings screen. Connectivity through USB or Ethernet ports can be enabled or disabled to comply with facility requirements.



**i Notes**

- The Administrator password or Technician password is required to make changes to Connectivity Settings.
- Multiple changes can be made after entering a valid password. Once changes have been selected and the Connectivity Settings screen exited, the password must be re-entered to make additional changes.
- The default Administrator password is 1234.

**✔ Enable/Disable USB and/or Ethernet Port**

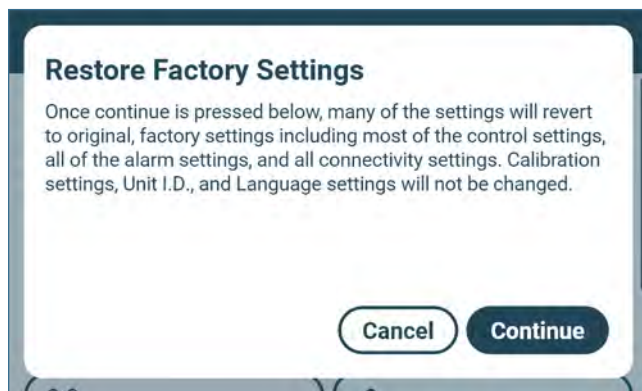
1. Toggle the **USB Port** button **On** or **Off** to select desired setting.
2. Toggle the Ethernet Port button On or Off to select the desired setting.
3. Select the back arrow to return to the Settings screen.

**✔ Enter Ethernet Settings**

Entering Ethernet Settings requires a Technician level password. Contact Helmer Technical Service for Ethernet API information to utilize this interface.

### 7.10 Restore Factory Settings

Return settings back to original factory settings.



**✔ Restore Factory Settings**

Select Restore Factory Settings and touch the Continue button to have the following settings revert to original factory settings: temperature set point, agitator speed set points, alarm settings, speed alarm settings, passwords and password configuration settings, sound settings, display settings (except language and unit ID), and connectivity settings (USB and Ethernet ON/OFF only).

### 7.11 System Functions

System functionality can be viewed, diagnosed and tested through System Functions. A Technician level password is necessary for access. Contact Helmer Technical Service for more information.

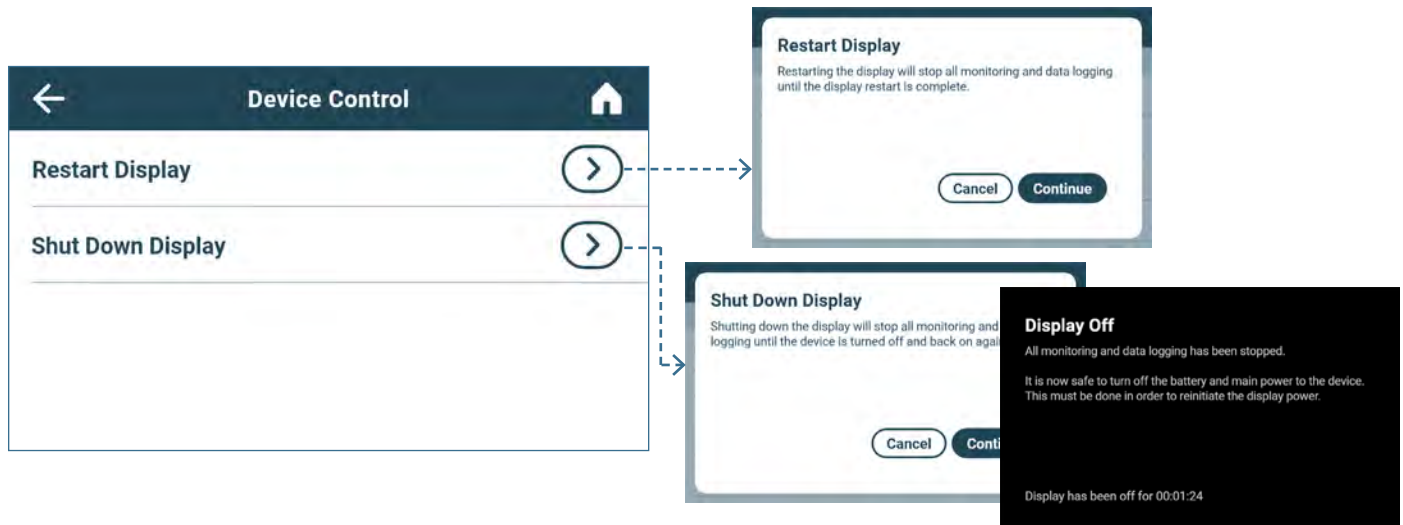
System Functions			
Name	Status	Name	Status
Full Heat	on	Heater Status	100%
Full Cool	on	Actual Compressor Speed	65535 RPM
Control Probe (NTC-1 J6)	22.2°C	Compressor Control State	Compressor Error
Ambient Probe	24.1°C	Compressor Status	Over Temperature
Door 1 Status	Closed	Door 2 Status	Closed

### 7.12 Device Control

Restart the i.Center Plus display or safely shut it down prior to powering down the unit.

**Note**

The Shut Down Display feature is also available from the Applications menu.



**Restart Display**

1. Touch the Restart Display Actions arrow. The Restart Display screen appears.
2. Touch the Continue button. The restart process shuts down the display then restarts it.

**Shut Down Display**

1. Touch the Shut Down Display Actions arrow. The Shut Down Display screen appears.
2. Touch the Continue button. The Display Off screen appears.







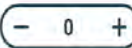


## Appendix A - Icon Reference Guide

### Common Buttons

Buttons are included to adjust settings or navigate through options. Keyboards with buttons for text, extended characters, and symbols vary by language selection.























**Notes:**

- When the Extended Character button is touched, the uppercase extended character keyboard is displayed by default. To display the lowercase extended character keyboard, touch the Lowercase button.
- Touch and hold the Back button to delete multiple characters.

i.Center Plus Apps Buttons		Alphanumeric Keyboard Buttons	
 	On/Off toggle button		Toggle the <b>Uppercase/Lowercase</b> button to navigate between the lowercase and uppercase character keyboard.
 	Enable/Disable toggle button		Touch the <b>Extended Character and Symbols</b> button to navigate to the extended character keyboard. A <b>1/2</b> button ( <i>not shown</i> ) on the Extended Character keyboard provides the option to toggle between extended characters and symbols.
	Spin box		Touch the <b>back</b> button to delete a character from the text window.
	Actions arrow		



**i.Center Plus Icons**

Icon	Description	Icon	Description	Icon	Description
	Home		Date/Time Change		Mute
	Event Log		Door Open		Power Failure
	Temperature Graph		Previous Screen		High Temp Alarm
	Alarm Test		Agitation Disabled		Low Temp Alarm
	Settings		Temperature Graph Back		Door Open Alarm
	Min/Max Reset		Temperature Graph Forward		Alarm Conditions
	Display Power Up		Temperature Graph Zoom In		Agitator Speed High/Low Alarm
	Information				

## Appendix B - i.Center Plus Reference Guide

### General Settings

#### Notes

- i.Center Plus settings are shown in this guide. Contact Helmer, Inc. for information about settings as they pertain to optional applications.
- General settings apply to Pro Line Floor model incubators.

Setting	Description	Default Value	Range
Temperature Setpoints	Set unit operation temperature	22°C	20 °C - 24 °C
Alarm Settings	Access alarm setpoint settings	Refer to Alarm Settings table	
Password Protection	Protect i.Center Plus Settings from unauthorized changes	On	
Change Password	Change password used to access i.Center Plus Settings	1234	
Sounds	Turn sound on or off (does not include alarms)	On	
Alarm Volume	Audible alarm volume	100%	0 - 100%
Alarm Tone	Audible alarm tone	3	1 - 4
Language	Language displayed on the i.Center Plus screen	English	
Date Format	Date display format	MM/DD/YYYY	
Day	Calendar day	Set at the factory	
Month	Calendar month	Set at the factory	
Year	Calendar year	Set at the factory	
Time Format	Time display format	12-hour	12-hour or 24-hour
Minute	Minute value	Set at the factory	
Hour	Hour value	Set at the factory	
AM/PM	AM or PM	Set at the factory	
Temperature Units	Temperature units in °C or °F	°C	°C or °F
Temperature Graph Screensaver	Display temperature graph as Home screen	On	
Alternate Screensaver (optional)	Display alternate screensaver as Home screen	Off	
Unit ID	Unique identification number for the i.Center Plus system	Unit serial number	Max 10 characters
Min/Max	Minimum and Maximum Primary Monitor Probe readings	Off	
Brightness	i.Center Plus display screen brightness	6 (brightest)	1 - 6
Sensor Calibration	Set probe temperature values to match measured temperature values	Refer to product Service Manual	
Primary Monitor Probe Offset	Offset value used to adjust temperature reading of the primary monitor temperature probe.	0°C	-10 °C - +10 °C -18 °F - +18 °F
Control Probe Offset	Offset value used to adjust temperature reading of the control probe	0°C	-10 °C - +10 °C -18 °F - +18 °F
Ambient Probe Offset	Offset value used to adjust temperature reading of the ambient probe.	0°C	
USB Port	Turn USB port on or off	On	
Ethernet Port	Turn Ethernet Port on or off	Off	
Restore Factory Settings	Change all settings to factory default values	Refer to product Service Manual	
Agitator Selection (if applicable)	Select agitator location within incubator	1	1 - 3
Agitator Speed Setpoint (PC2200-Pro - PC3200-Pro)	Set agitator speed (cycles per minute - CPM)	72	20 - 90
Agitator Speed Setpoint (PC4200-Pro)	Set agitator speed (cycles per minute - CPM)	Refer to product Service Manual	60 - 75

## Alarm Settings

Setting	Description	Default Value		Range
		2200/3200	4200	
Primary Monitor Probe High Temp (set point)	High temperature at which alarm condition occurs	24 °C		-100 - +50 °C -148 - +122 °F
Primary Monitor Probe High Temp (time delay)	Time after high temperature alarm condition occurs until alarm sounds	0 minutes		0-20 minutes
Secondary Monitor Probe Low Temp (set point)	Low temperature at which alarm condition occurs	20 °C		-100 - +50 °C -148 - +122 °F
Secondary Monitor Probe Low Temp (time delay)	Time after low temperature alarm condition occurs until alarm sounds	0 minutes		0-20 minutes
Power Failure	Time after power failure occurs until alarm sounds	1 minute		0-99 minutes
Probe Failure	Time after probe failure occurs until alarm sounds	0 minutes		0-99 minutes
Door Open	Time door remains open until alarm sounds	3 minutes		0-99 minutes
Agitator High Speed	High speed at which alarm condition occurs	75 CPM	67 CPM	21-90 CPM
Agitator Low Speed	Low speed at which alarm condition occurs	65 CPM	60 CPM	20-89 CPM
Agitator Speed Time Delay	Time after speed alarm condition occurs until alarm sounds	1 minute		0-99 minutes

**Helmer Scientific**

14400 Bergen Boulevard, Noblesville, IN 46060 USA  
PH +1.317.773.9073 FX +1.317.773.9082

---